

# COSAPOTS

DESIGNED FOR IMPACT





# Designed for impact

Inspiration is everywhere.  
On every corner. In every street.  
Shapes. Materials. Patterns. Our  
architects use this inspiration to  
design our unique collection.

Cosapots are strong, lightweight  
and available in exceptionally  
large sizes, perfect for both  
indoor and outdoor spaces.



# Built to last!

All Cosapots are constructed by highly skilled craftsmen and made from high-quality fiberglass combined with the best polyesters. Each piece takes 3 to 7 days to finish and is 100% handmade.



The design explained

## Premium appearance

The high, solid inner rim conceals the interior framework, allowing it to remain visible and contribute to a high-end appearance.

## Frost resistant & impermeable

Made from Cohesa, the best quality fiberglass combined with polyester and natural additives.

## Waterproof

Completely sealed with a watertight layer on the inside of the pot. Holes are to be drilled in the bottom for outdoor use, allowing for proper drainage.

## Structural reinforcement

Every Cosapots has built-in structural reinforcements to improve durability, ensuring superior strength even in demanding environments.

## Hand-finished texture

The lightweight material allows for easy mobility but has the look of heavy stone.

## Easy to re-pot

The unique, thin rim maximizes space and indicates the maximum filling height, while also lowering the center of gravity to enhance stability.

# Unique strength

Up to 7 layers of resin and fiberglass,  
a solid inward rim and additional  
reinforcements give the planter  
body superior strength.

# Timeless colors

Our natural, stone-like look is achieved by mixing carefully selected premium materials and natural colorants.



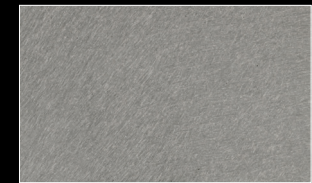
Carbon stone



Brown stone



Grey stone



Concrete stone



River stone\*

\*Special order for select styles



Taupe stone\*

\*Special order



Sand stone



designed by architects



durable & strong



lightweight



extra large sizes



handcrafted



indoor & outdoor



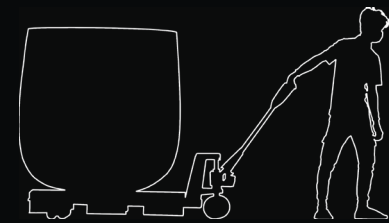
UV & frost-resistant



tall & solid inner rim



COSAPOTS  
EVERYTHING A GALLERY



# Shipping

Fast shipping for in-stock items  
from our U.S. distribution centers.

COSAPOTS  
DESIGNED FOR IMPACT

# The collection



Mondo

- 8.5" diam. x 7.7"H
- 10.8" diam. x 9.6"H
- 13.6" diam. x 12.1"H
- 18.2" diam. x 16.1"H
- 19.7" diam. x 18.5"H
- 26" diam. x 24"H
- 33.1" diam. x 30.7"H
- 39.4" diam. x 39.4"H
- 47.2" diam. x 49.2"H \*



Mondo low

- 9.5" diam. x 5"H



Mondo high

- 17.7" diam. x 30.7"H
- 21.7" diam. x 35.4"H



Juno\*

- 23.6" diam. x 25.6"H
- 27.6" diam. x 30"H
- 33.46" diam. x 36.2"H
- 37.4" diam. x 40.2"H
- 41.3" diam. x 44.1"H



Lofto

- 14.6" diam. x 30.3"H
- 16.5" diam. x 36.2"H
- 19.7" diam. x 43.3"H



Lupo

- 20.1" diam. x 15.4"H
- 24.4" diam. x 18.7"H
- 32.2" diam. x 24.6"H
- 37.4" diam. x 28.3"H
- 47.2" diam. x 35.8"H \*



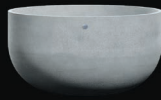
Amo\*

- 31.5" diam. x 27.6"H
- 55.1" diam. x 29.9"H
- 39.4" diam. x 33.9"H
- 51.2" diam. x 39.4"H



Opulo\*

- 21.7" diam. x 17.7"H
- 29.5" diam. x 25.6"H
- 39.4" diam. x 37.4"H



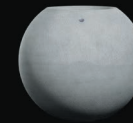
Roco

- 24.4" diam. x 13"H
- 36.6" diam. x 19.3"H
- 49.2" diam. x 26"H \*



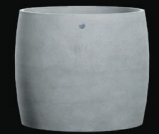
Cavo

- 19.7" diam. x 7.9"H
- 31.5" diam. x 9.8"H
- 43.3" diam. x 11.8"H \*



Orbo

- 23.6" diam. x 24.4"H
- 29.5" diam. x 25.6"H
- 35.4" diam. x 30.7"H



Keggo\*

- 19.7" diam. x 18.1"H
- 23.6" diam. x 21.7"H
- 27.6" diam. x 23.6"H
- 31.5" diam. x 27.2"H

\*Special order - 120-day lead time

\*Special order - 120-day lead time

# The collection



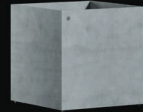
Reglo

- 11.8"L x 11.8"W x 31.5"H
- 23.6"L x 11.8"W x 31.5"H
- 35.4"L x 11.8"W x 31.5"H
- 35.4"L x 11.8"W x 15.7"H



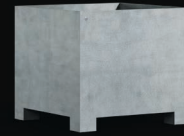
Reglito\*

- 19.7"L x 19.7"W x 15.7"H
- 19.7"L x 19.7"W x 23.6"H
- 19.7"L x 19.7"W x 31.5"H



Reglito Cube

- 19.7"L x 19.7"W x 19.7"H
- 24.2"L x 24.2"W x 24.2"H
- 27.6"L x 27.6"W x 27.6"H
- 31.5"L x 31.5"W x 31.5"H
- 35.4"L x 35.4"W x 35.4"H
- 39.4"L x 39.4"W x 39.4"H \*



Semplo feet\*

- 39.4"L x 39.4"W x 19.7"H
- 39.4"L x 39.4"W x 27.6"H
- 39.4"L x 39.4"W x 35.4"H



Semplito

- 39.4"L x 19.7"W x 16.3"H
- 39.4"L x 19.7"W x 24.2"H
- 39.4"L x 19.7"W x 32.1"H



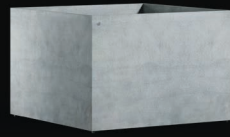
Semplito grand

- 59.1"L x 19.7"W x 15.7"H \*
- 59.1"L x 19.7"W x 24.2"H



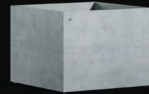
Semplo\*

- 39.4"L x 39.4"W x 15.7"H
- 39.4"L x 39.4"W x 23.6"H
- 39.4"L x 39.4"W x 31.5"H



Semplo grand\*

- 47.2"L x 47.2"W x 23.6"H
- 47.2"L x 47.2"W x 31.5"H
- 47.2"L x 47.2"W x 39.4"H



Semplo minor\*

- 31.5"L x 31.5"W x 15.7"H
- 31.5"L x 31.5"W x 23.6"H

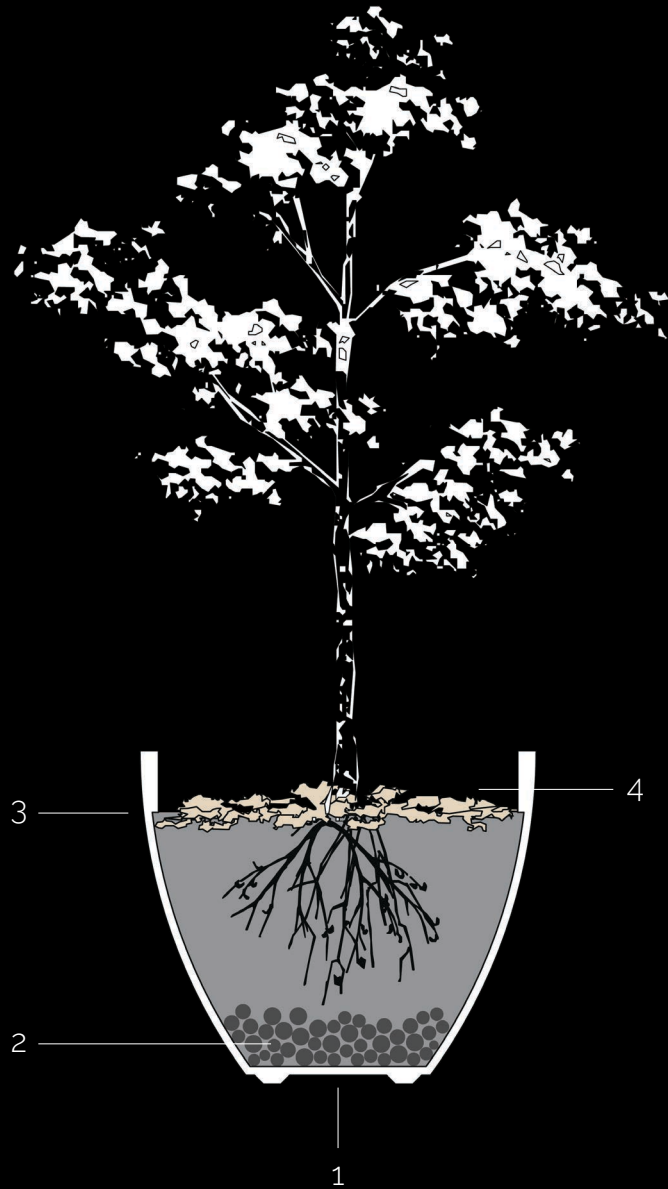


Lonno

- 78.7"L x 19.7"W x 23.6"H
- 118.1"L x 19.7"W x 23.6"H \*

\*Special order - 120-day lead time

# How to plant



1. When used outdoors, drill holes every 12 inch of planter space in the bottom of the pot to allow for sufficient drainage. Use a 1 inch drill bit. The excess water can flow away along the raised bottom.
2. Add a layer of porous substrate of minimum 10% of the pot's height. Let a plant expert assist you in optimal watering management according to your planter's size and plant's specific needs.
3. Select the right soil for your plant and fill the pot. The bottom of the inner rim indicates the maximum filling height for an aesthetic result.
4. Cover the soil with bark chippings or similar decorative toppings to prevent weeds from spreading and wet soil from splashing up.

# Invest in quality

Each Cosapots planter is meticulously crafted and backed by a five-year warranty. If a defect arises, we'll make it right with a prompt repair, a replacement, or a credit.



Cosapots is a brand by

The **POTS** Company<sub>nv</sub>



[cosapots.com](https://cosapots.com)